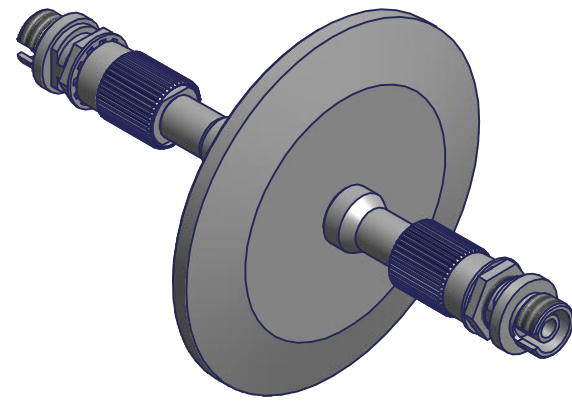
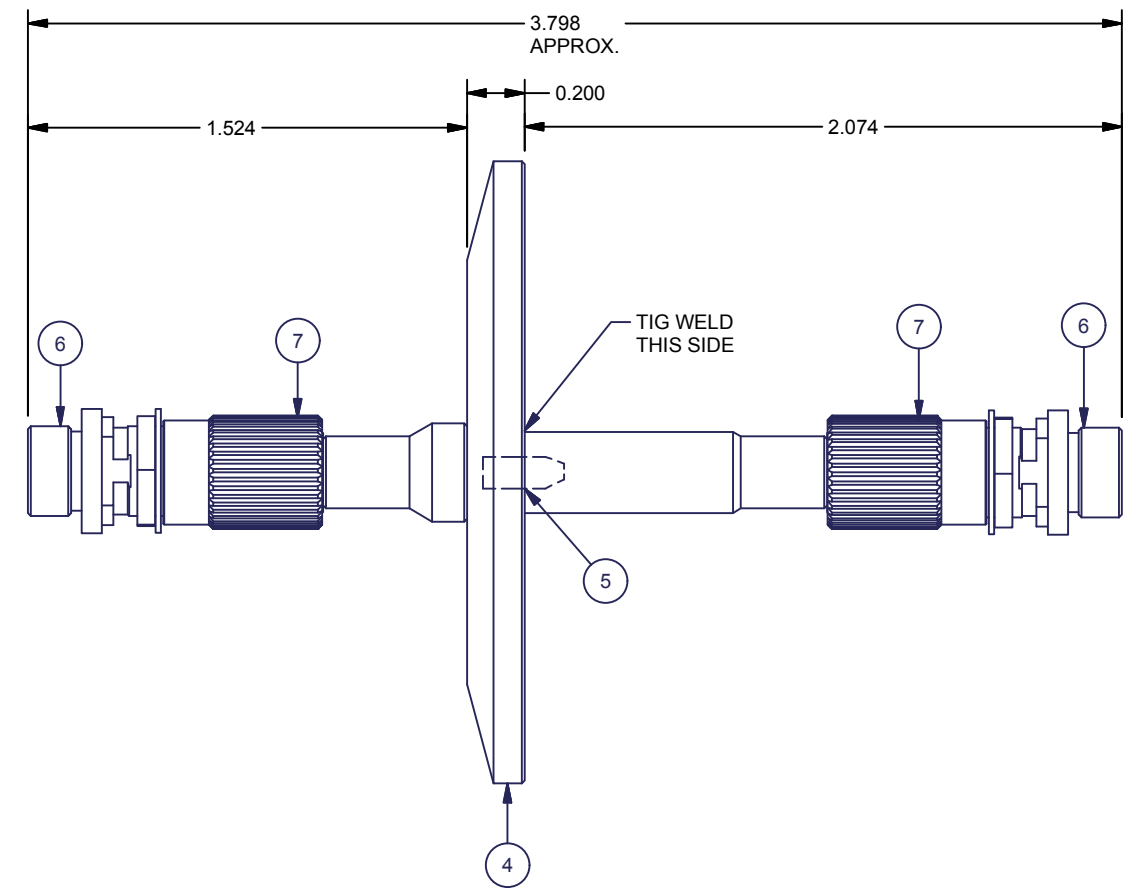
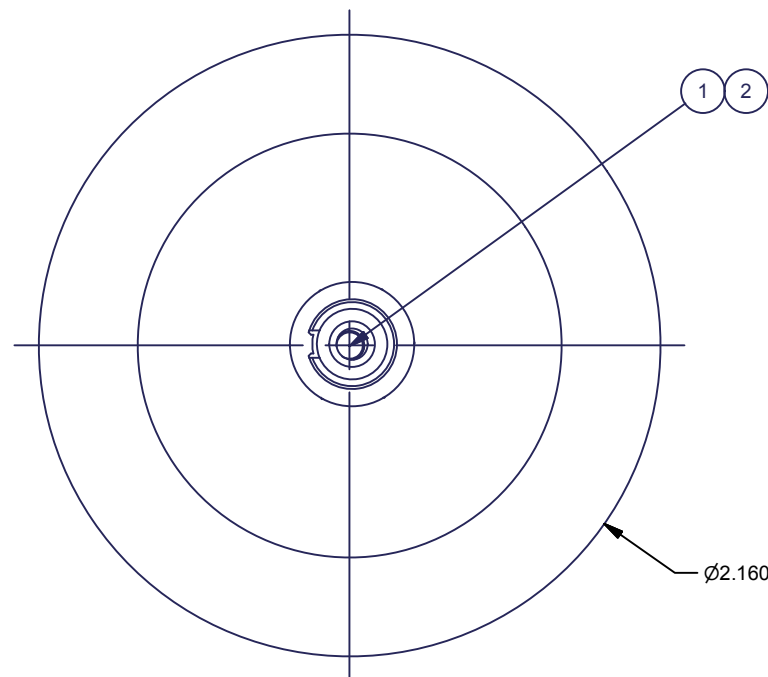


REV	DESCRIPTION	DATE	APPROVED



- NOTES:**
- TEST AND RECORD OPTICAL DATA.
CUSTOMER WAVELENGTH: NOT SPECIFIED.
INPUT: 99% AT 0.20NA, 50µ APERTURE, 632.8nm
OUTPUT: ≥ 90% FULL APERTURE.
REFER TO WIN 753 004.
 - FOR FIBER EPOXY SEE REF 823 007 CURE SCHEDULE "A".
 - WIN 823 019 IN CONNECTORS ONLY.
 - TEST VACUUM TO 10⁻⁶ BAR.

Parts List				
ITEM	QTY	U/M	PART NUMBER	DESCRIPTION
1	1	EA	AGI62.5/125/145T	FIBER, GRADED INDEX-2.0 THERMOCOAT (NA = 0.26)
2	A/R	--	STOCK	EPOXY
3	A/R	--	STOCK	EPOXY
4	1	EA	FG6971	COMBO, FG6970 AND VFT-FLG-K40
5	1	EA	VFT-INS-200	VACUUM FEEDTHROUGH INSERT
6	2	EA	504013-1	ADAPTOR, FC, MULTIMODE
7	2	EA	FCL125-S	FC LG BK 125 SST,MULTIMODE

UNLESS OTHERWISE SPECIFIED DIMENSIONS ARE IN INCHES AND TOLERANCES ARE: .XXXX = ± .0005 .XXX = ± .005 .XX = ± .015 .X = ± .050 ANGLES = ±1° √32/INSIDE √32/OUTSIDE	DIMS CALLED OUT IN METRIC TOLERANCES ARE: .XXXX = ± .0001 .XXX = ± .010 .XX = ± .10 .X = ± .20 ANGLES = ±1° √0.8/INSIDE √0.8/OUTSIDE	CUSTOMER NAME: FUDAN UNIV.		
		DRAWN 8/18/15 S. RAYANIC	DWG NO CB22330	
DO NOT SCALE THIS DRAWING		CUSTOMER SIGNATURE (IF REQUIRED)		DATE

THIS DRAWING AND THE INFORMATION SET FORTH HERON ARE THE PROPERTY OF FIBERGUIDE INDUSTRIES, AND ARE TO BE HELD IN TRUST AND CONFIDENCE. PUBLICATION, DUPLICATION, DISCLOSURE, OR USE FOR ANY PURPOSE NOT EXPRESSLY AUTHORIZED IN WRITING BY FIBERGUIDE INDUSTRIES IS STRICTLY PROHIBITED.

CHECKED DATE SHEET **1** OF **2**